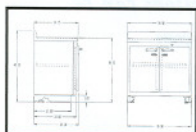


LEAD-LINED PREPARATION ENCLOSURE BASE CABINET



Built to support the Preparation Enclosure

This Cabinet is designed to support the Lead-Lined Preparation Enclosure. Full height, overlapping double doors with key locks open to an adjustable shelf with a 100 lb capacity. The cabinet may be used for decay and storage.



Cabinet drawing dimensions can be accessed at www.biodex.com

SPECIFICATIONS:

Dimensions: 36.5" w x 24" depth x 36.5" h (92.7 x 61 x 92.7 cm)

Lead Shielding: .25" (.64 cm), .5" (1.3 cm) or 1" (2.5 cm) thick on all six sides

Shelf Dimensions: 30" w x 18" depth (76.2 x 45.72 cm), 100 lb (45.4 kg) capacity, adjustable height

Doors: Key-locked

Countertop: Stainless steel with 4" backsplash and .5" spillproof lip

Finish: Powder coat

Weight:

244-190: 1063 lb (483.2 kg)

244-191: 1540 lb (699 kg)

244-192: 2433 lb (1104 kg)

- 244-190** Cabinet, Preparation Enclosure Base, .25" lead.....
- 244-191** Cabinet, Preparation Enclosure Base, .5" lead.....
- 244-192** Cabinet, Preparation Enclosure Base, 1" lead.....